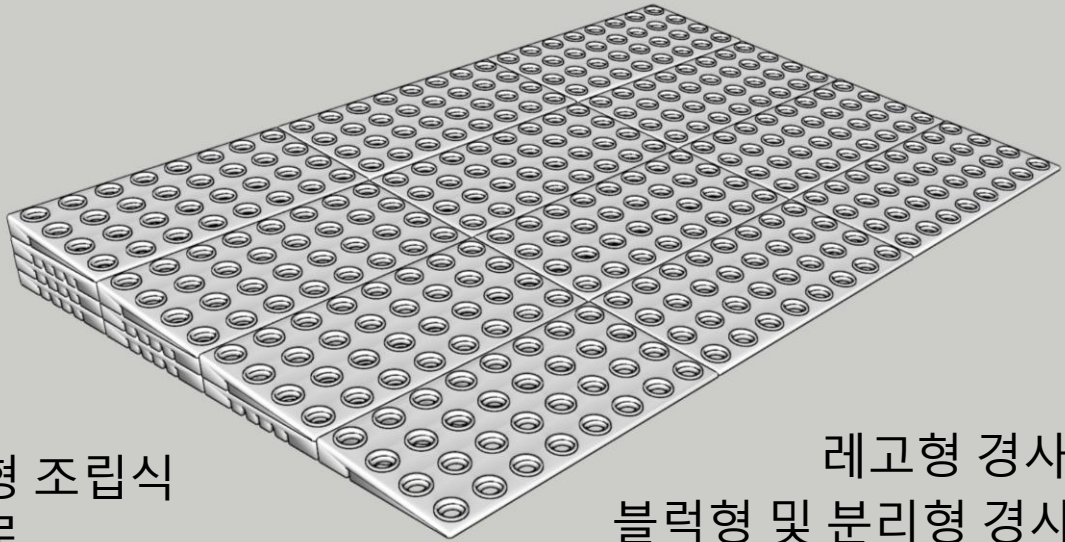


HTNC-EZ-RAMP KIT

T. 070-7135-7778 F. 032-681-7778

Information

BLOCK TYPE DETACHABLE RAMP



블록형 조립식
경사로

레고형 경사로
블럭형 및 분리형 경사로



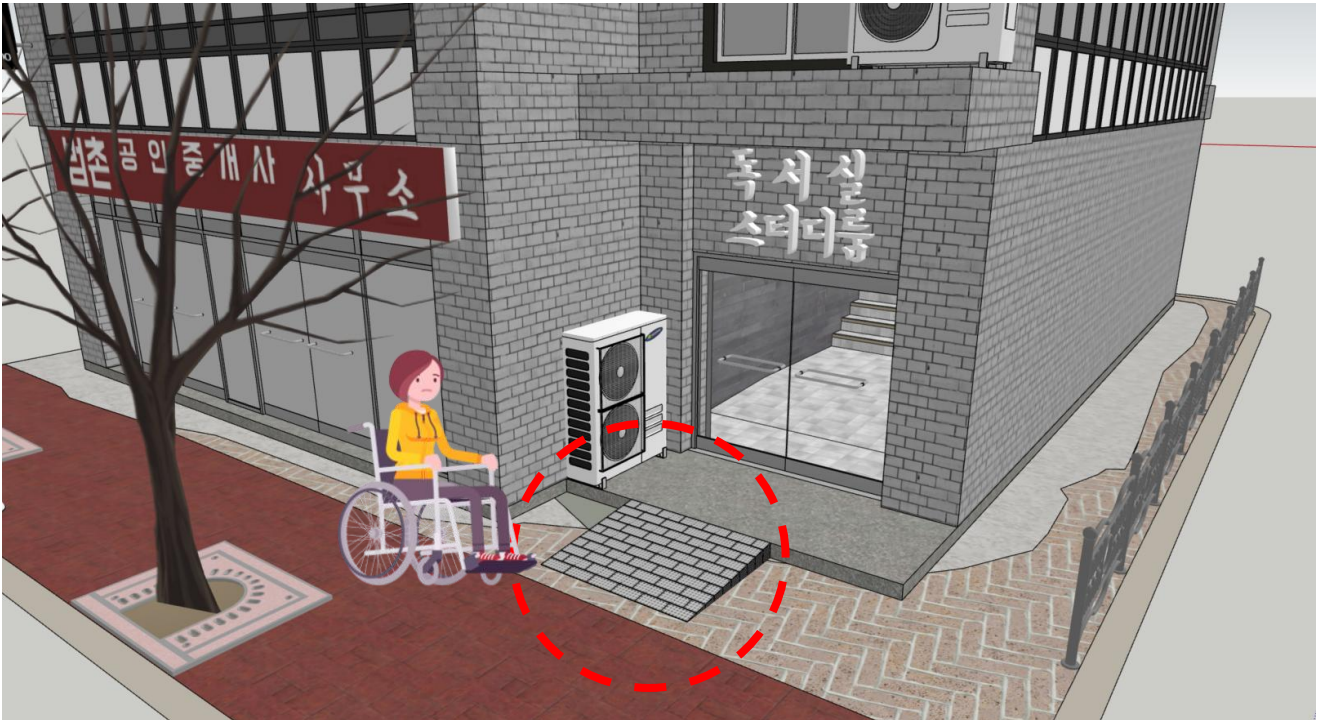
경기도 부천시 오정구 부천로 391번길 30 (주)에이치티엔씨 3층



Before



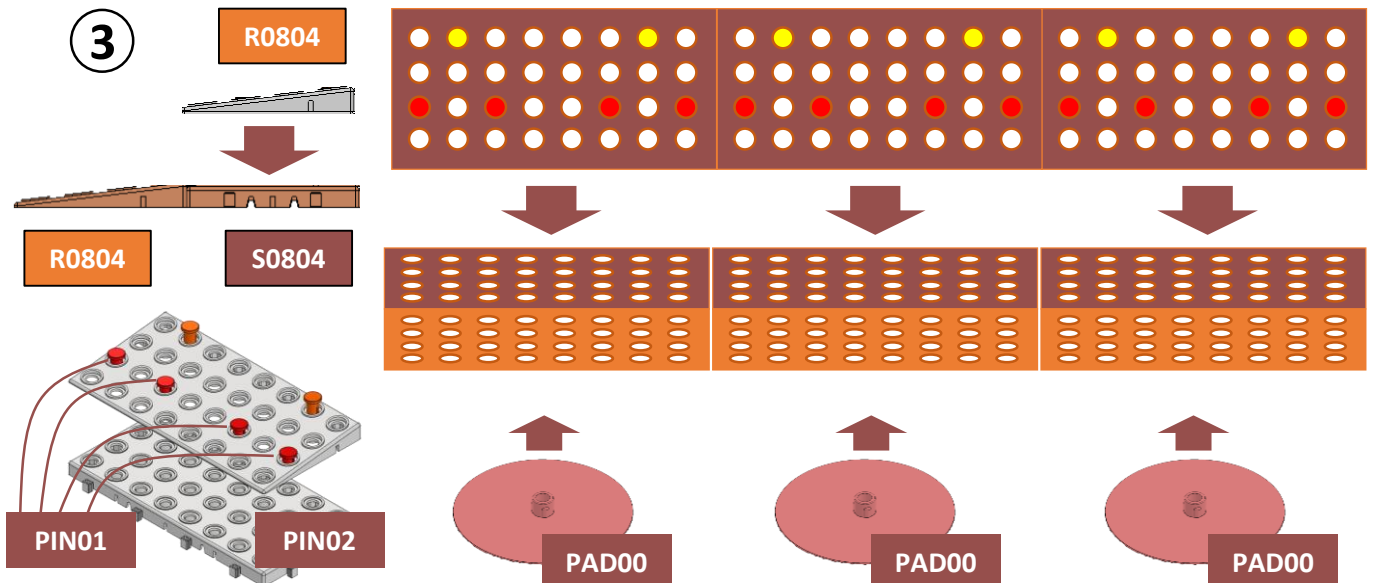
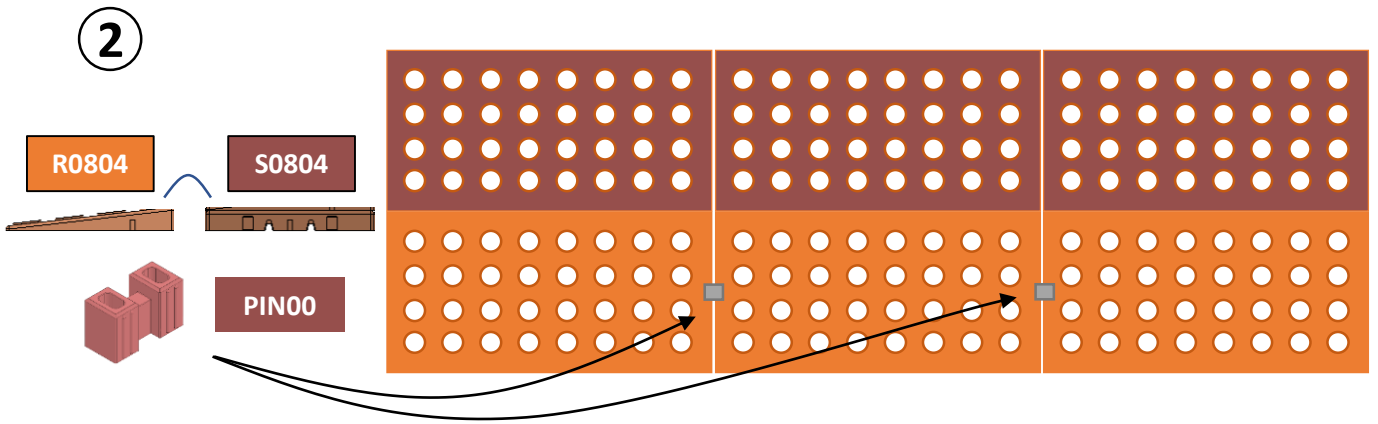
After



After

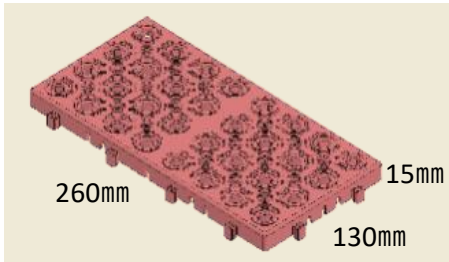
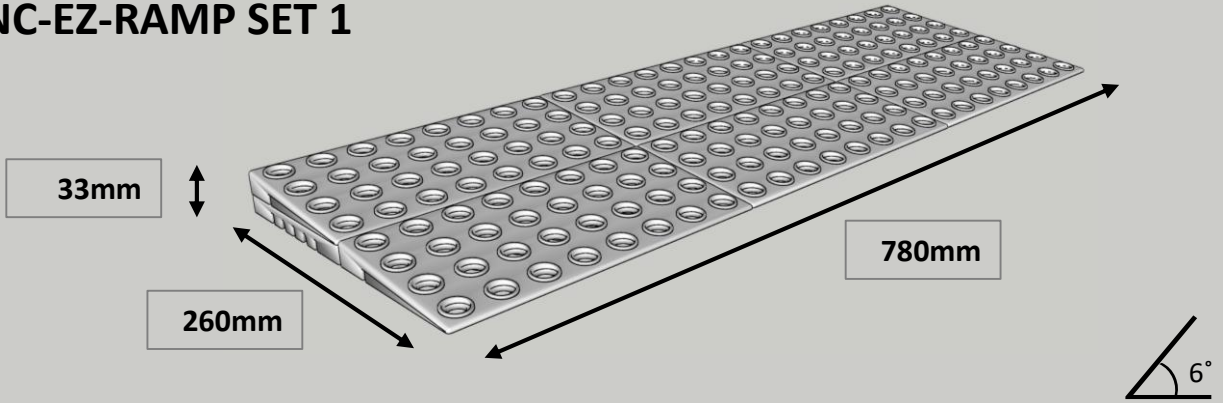


HTNC-EZ-RAMP



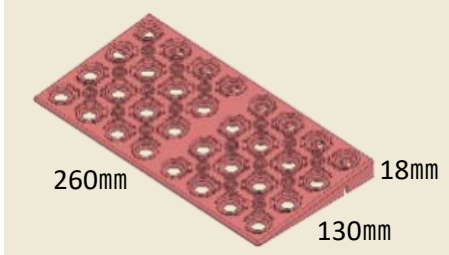
세트

HTNC-EZ-RAMP SET 1



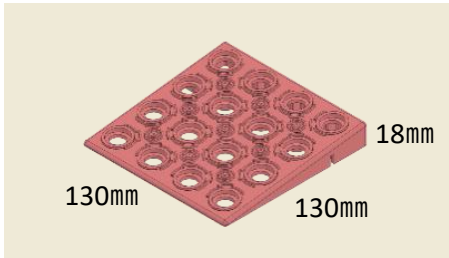
S0804

3EA



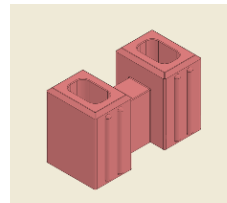
R0804

5EA



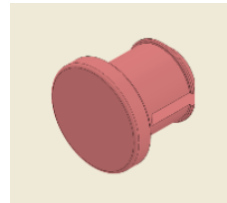
R0404

2EA



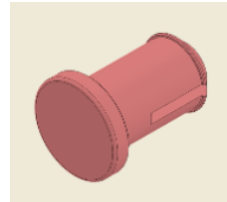
PIN00

2EA



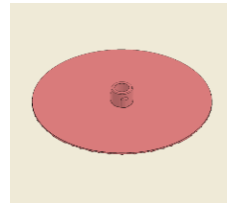
PIN01

12EA



PIN02

6EA



PAD00

3EA

HDPE
(High Density Polyethylene)

PANTONE 11-0105 TPX
RGB: 239 234 215
HEX: EFEAD7

HDPE
(High Density Polyethylene)

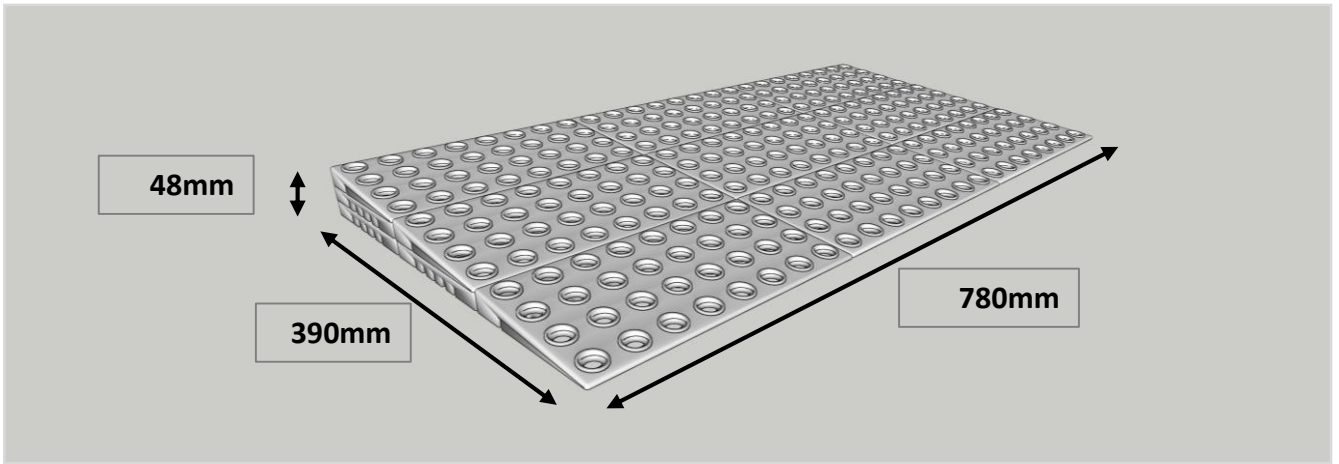
PANTONE PQ-18-1438 TCX
RGB: 150 79 76
HEX: 955251

LLDPE
(Linear Low-Density Polyethylene)

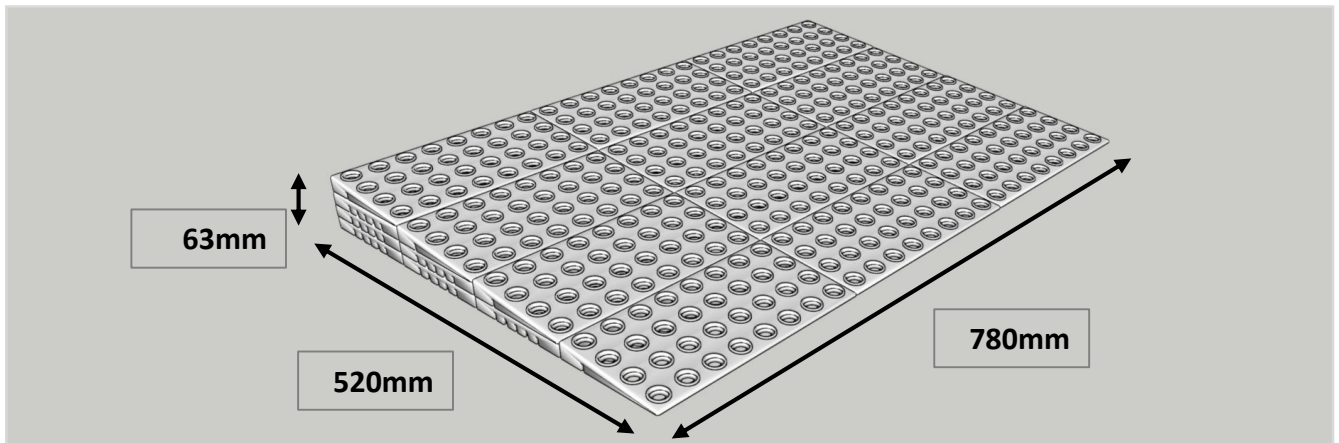
PANTONE 14-4107 TCX
RGB: 186 187 189
HEX: BABBBB

세트

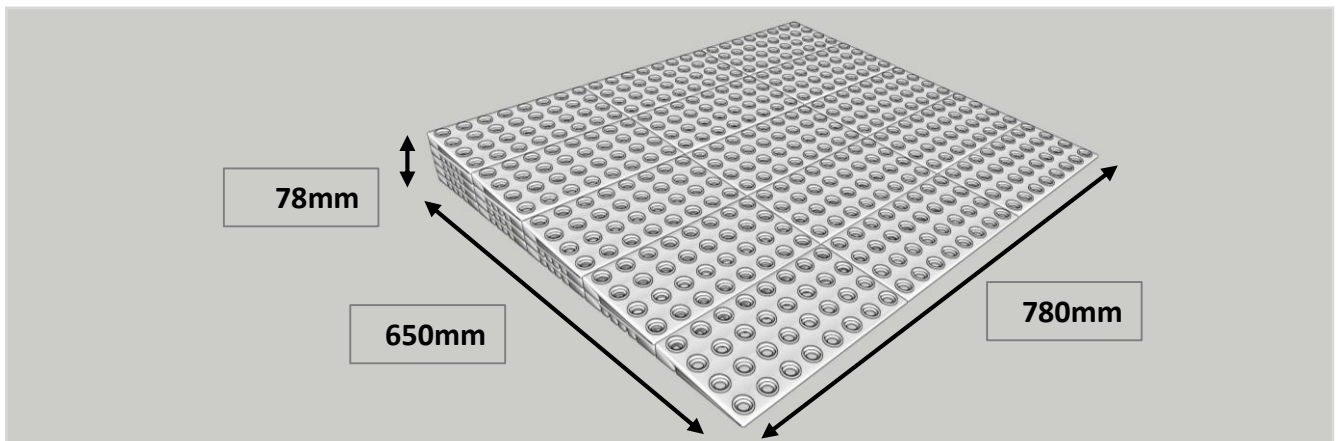
HTNC-EZ-RAMP SET 2



HTNC-EZ-RAMP SET 3

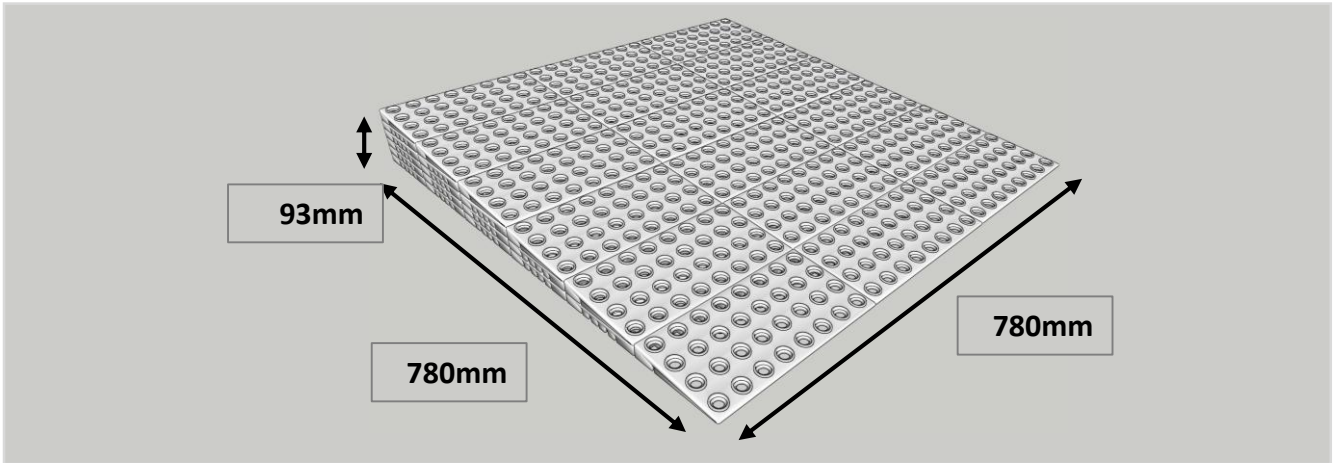


HTNC-EZ-RAMP SET 4

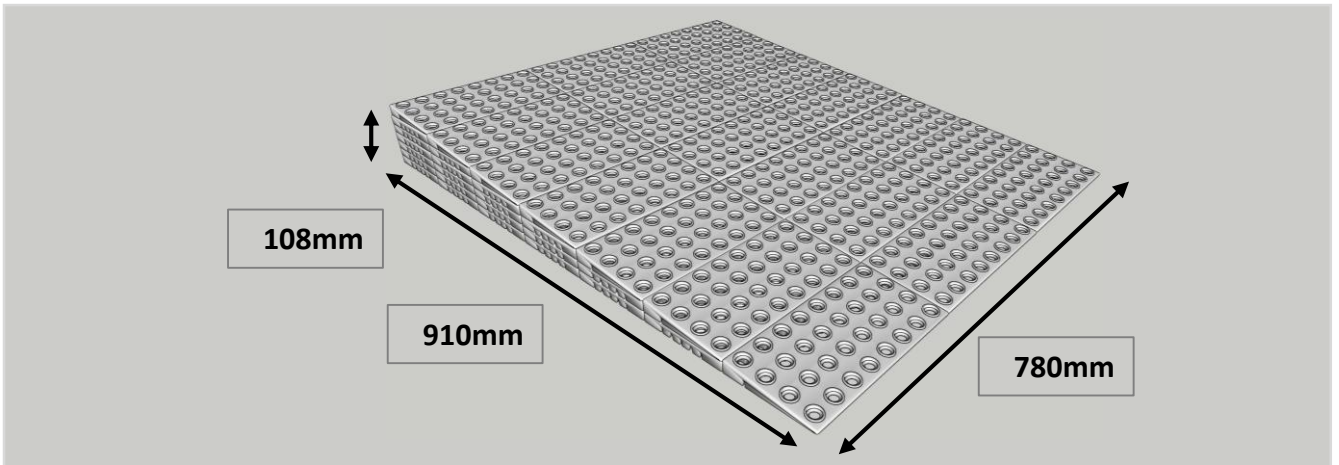


세트

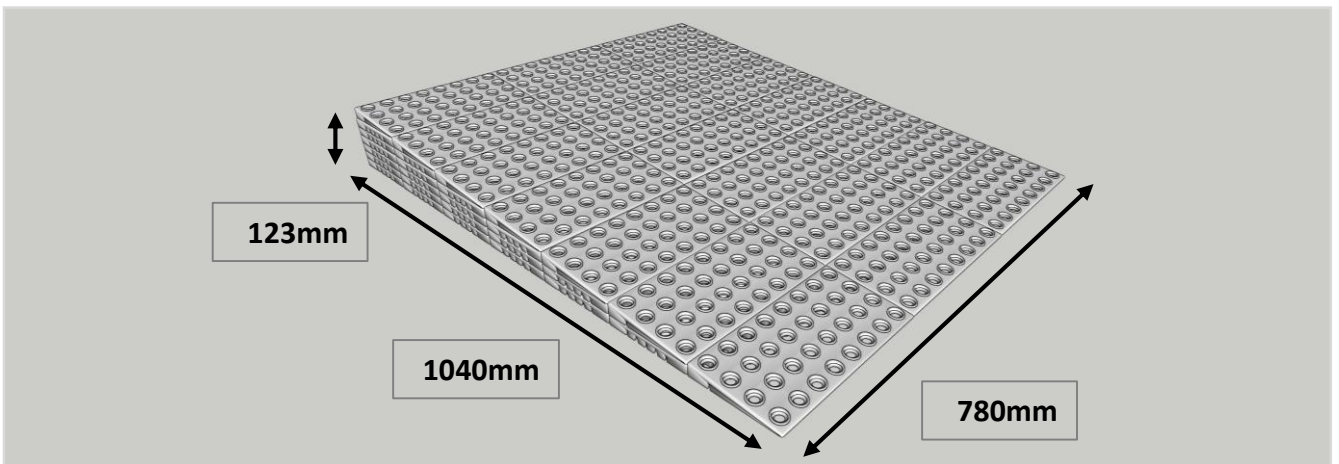
HTNC-EZ-RAMP SET 5



HTNC-EZ-RAMP SET 6



HTNC-EZ-RAMP SET 7



경사로 구매 및 관련 자료 담당자

건축
문의



HumanTechnology & Complex co., Ltd

관리부 / 사원
Department of Management
Staff

경기도 부천시 부천로391번길 30 (3층, 도운빌딩)

T 070-7135-7778 +82-70-7135-7778

F 032-6 8 1-7778 +82-32-6 8 1-7778

M 010-7179-7023 +82-10-7179-7023

E mingggju@htnc.co.kr

H www.htnc.co.kr

김민주

Min-Ju, Kim

건축
문의



HumanTechnology & Complex co., Ltd

기술개발부 / 부장
Technical Development Center
General Manager

14490 경기도 부천시 부천로391번길 30 (3층, 도운빌딩)

T 070-7135-7778 +82-70-7135-7778

F 032-6 8 1-7778 +82-32-6 8 1-7778

M 010-4311-9488 +82-10-4311-9488

E kimsmmy@htnc.co.kr

H www.htnc.co.kr

김삼영

Sam-Young, Kim

기술
문의



HumanTechnology & Complex co., Ltd

CEO / 공학박사
Chief Technical Officer / Ph.D

경기도 부천시 부천로391번길 30 (5층, 도운빌딩)

T 070-7135-7778 +82-70-7135-7778

F 032-6 8 1-7778 +82-32-6 8 1-7778

M 010-9024-2929 +82-10-9024-2929

E dk@htnc.co.kr

H www.htnc.co.kr

대표이사

이동광

Dong-Kwang, Lee